

# Experts in EPR reporting and sustainable packaging.

We specialise in collecting  
and analysing packaging  
and product data, offering  
assistance with EPR and CSR  
reporting.

# Key areas of expertise



## Regulatory reporting

- Gather and manage validated packaging data
- Calculate compliance obligations
- Complete compliance reports in line with regulatory requirements



## Cost modelling & analysis

- Forecast future compliance costs
- Analyse costs to determine largest contributors
- Develop strategies to mitigate compliance costs
- Model financial impact of regulatory changes



## Sustainability target tracking

- Develop and set packaging sustainability goals
- Track progress via our Insight Platform
- Identify and act on areas preventing you from achieving goals

# Simplifying complex data and compliance reporting

**Our Data Services exist to create a robust and high-quality packaging data set for our customers, helping to make compliance and CSR reporting processes more efficient.**

### We can:

- Collect data from your suppliers via our Product Data Hub (PDH)
- Store and manage data within our internal product and packaging database to ease the burden of managing data
- Calculate your EPR submissions on your behalf
- Manipulate data into the correct format for submission in line with EPR Regulations
- Provide detailed insight of the packaging your business handles, helping to analyse packaging to reduce weights and improve design
- Support your company's progress towards achieving broader packaging CSR objectives

# Product Data Hub

## Gathering data from your suppliers

**Our Product Data Hub is an online tool that allows us to efficiently gather packaging data from our customers' suppliers. The hub is equipped with a comprehensive set of automated checks to guarantee the accuracy of all data being collected for your dataset.**

The Product Data Hub enables us to collect a wide range of metrics including:

- Packaging weights
- Material types
- Recycled content percentage and evidence
- Detailed data required for EPR reporting

This tool helps our customers future proof their data ready for the introduction of EPR Regulations by collecting data on for example sustainability, lamination, certification, and recyclability.

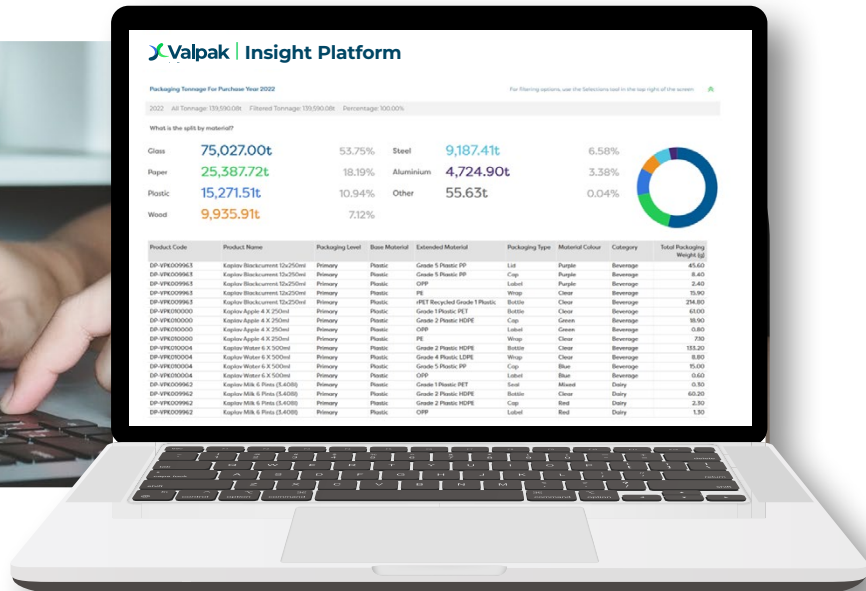
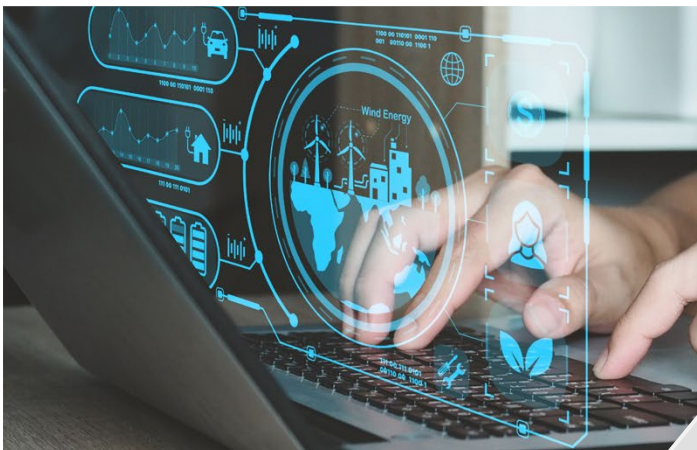


# Valpak Insight Platform

## Global EPR reporting software

Customers report annual average cost savings of **£10K+**

The Valpak Insight Platform is a customisable, online reporting tool that provides full visibility of your packaging data at SKU and component level. This enables advanced cost modelling for current and future legislation reporting requirements.



### Compliance cost modelling

Offers sophisticated cost modelling features to address both current and expected legislative reporting obligations. Using modelled compliance levies, the Platform provides accurate packaging cost forecasts at a detailed level.

### Detailed packaging data

Comprises modules that provide a comprehensive overview of packaging data, including information regarding material types, data sources, and component specifications.

### CSR reporting

Automated reports can be sent monthly to all stakeholders to track progress against Corporate Social Responsibility (CSR) targets.

## Our comprehensive service also includes

- A dedicated account manager on hand to provide ongoing support, identify requirements and produce specific reports at any point
- Team training on how to use the Platform
- Packaging compliance reporting audit support

# Packaging optimisation

If you are looking to assess and reduce the environmental impact of your business's products or packaging, we can provide further support offering additional value-added services:

## Packaging analysis

Benchmark your business's packaging with the competition and wider industry.

## 'What If' modelling

A before and after comparison of your business's packaging data. The tool enables you to apply a set of hypothetical modifications to your packaging data to identify how changes can impact costs and obligated tonnage.

## Life cycle assessments

Understand the environmental impacts of your product packaging over the entire life cycle.

## Packaging technology consultancy

We can help your business to make positive, cost-effective change to packaging to improve environmental performance.



# What our customers have to say

## Tesco Stores Limited



*“Tesco highly recommend the Insight Platform for anyone looking to get significantly increased value from their packaging data and is delighted to have supported Valpak in its development.*”



## M&S International



*“We have used Valpak for our Packaging Regulations data support over the last couple of years. They have provided us with excellent support, demonstrating expertise, diligence, and a commercial approach to delivering a quality and value-added service in a timely manner. This has considerably reduced the time previously taken to prepare the required data. We are extremely pleased to have Valpak as our compliance partner.*”

For more  
information  
please  
contact us.



Unit 4,  
Stratford Business Park,  
Banbury Road,  
Stratford-upon-Avon  
CV37 7GW

---

**03450 682 572**  
**info@valpak.co.uk**  
**valpak.co.uk**