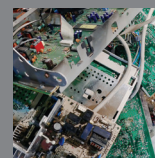


Obligation Calculation for Producers of EEE Intended for use by Private Households



Valpak's role, as a WEEE Producer Compliance Scheme, is to arrange the collection, treatment and environmentally sound disposal of an equivalent amount of WEEE to meet each of our member's obligations under the UK WEEE Regulations.

A producer of EEE intended for use by private households' obligation is calculated per EEE category, using the following formula as set out in the UK WEEE Regulations:

$$(A/B) \times C$$

- A** is the total amount, in tonnes, of B2C EEE (intended for use by private households) that has been put onto the UK market by an individual producer in a particular category over a compliance period.
- B** is the total amount, in tonnes, of B2C EEE (intended for use by private households) that has been put on the market by all producers in a particular category over the same compliance period as A.
- C** is the total amount, in tonnes, of WEEE from private households that fall within the relevant category and is deposited at Designated Collection Facilities (DCFs).

The above formula is designed to determine a producer's market share of WEEE intended for use by private households, and thus the amount of WEEE a producer compliance scheme has to collect and treat on an individual producer's behalf.

For further information regarding your WEEE data submission please contact a technical advisor on 08450 682 572 or email info@valpak.co.uk

